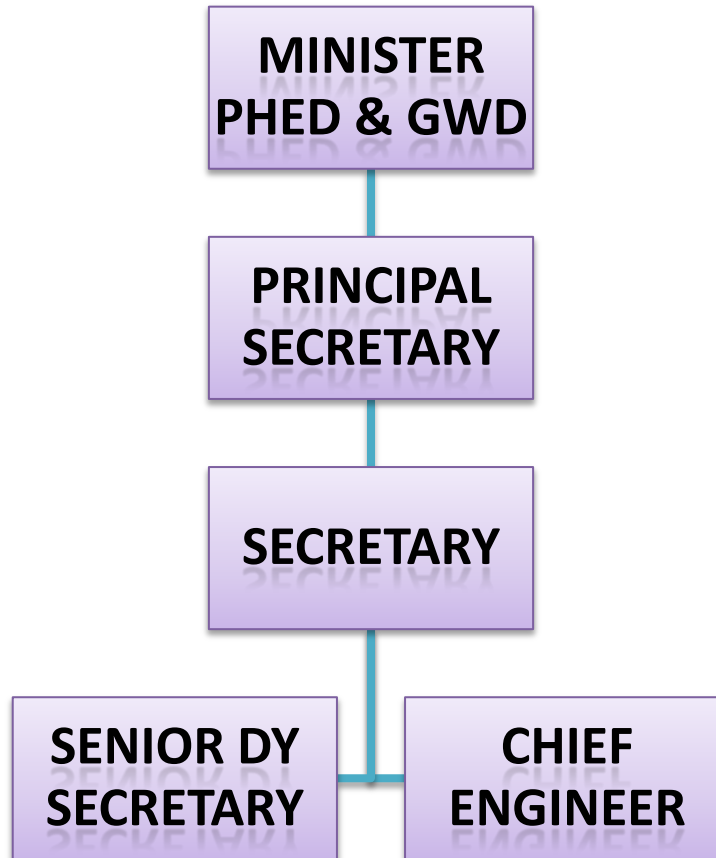


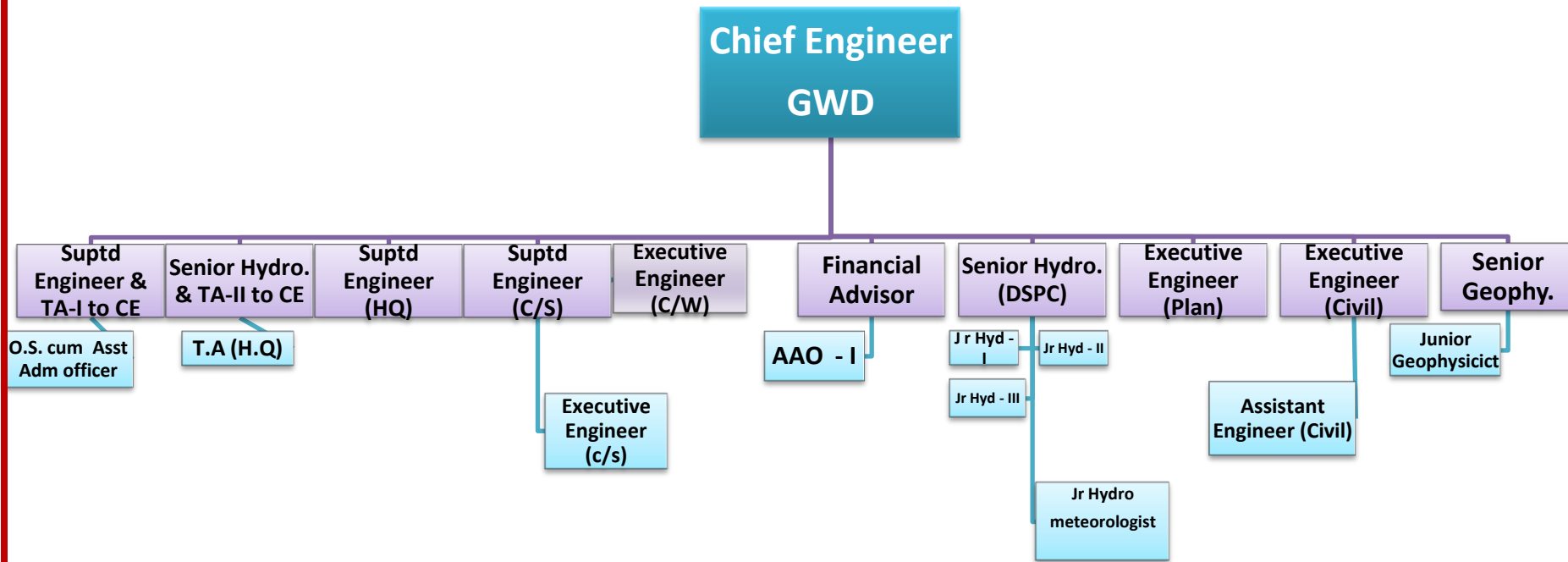
# GWD Administrative Set up

Level 1 : Government Level



# GWD Organizational structure

## Level 2 : Head Office Level



TA- Technical Assistant, DSPC = Data Storage and Processing Cell, C/S= Central Store, C/W = Central Workshop, O.S. = Office Superintendent

# GWD Organisational structure

## Level 3A : Engineering Circles

Chief Engineer

S.E. & TA-I to CE

S.E. Jaipur

S.E. Jodhpur

S.E. Udaipur

Ex.En. Jaipur

Ex.En. Alwar

Ex.En. Jodhpur

Ex.En. Barmer

Ex.En. Udaipur

Ex.En. Kota

A.En Jaipur

A.En Jhunjhunu

A.En. Alwar

A.En. Bharatpur

A.En. - I Jodhpur

A.En. - II Jodhpur

A.En. - I Barmer

A.En. - II Barmer

A.En. Bhilwara

A.En. Chittor

A.En. Ajmer

A.En. Jhalawar

A.En Sikar

A.En. Nagaur

A.En. Jaisalmer

A.En. Udaipur

A.En. Kota

Ex.En. Bikaner

Ex.En. Pali

Ex.En. Dungarpur

A.En - I Bikaner

A.En - II Bikaner

A.En. Pali

A.En. Jalore

A.En. Dungarpur

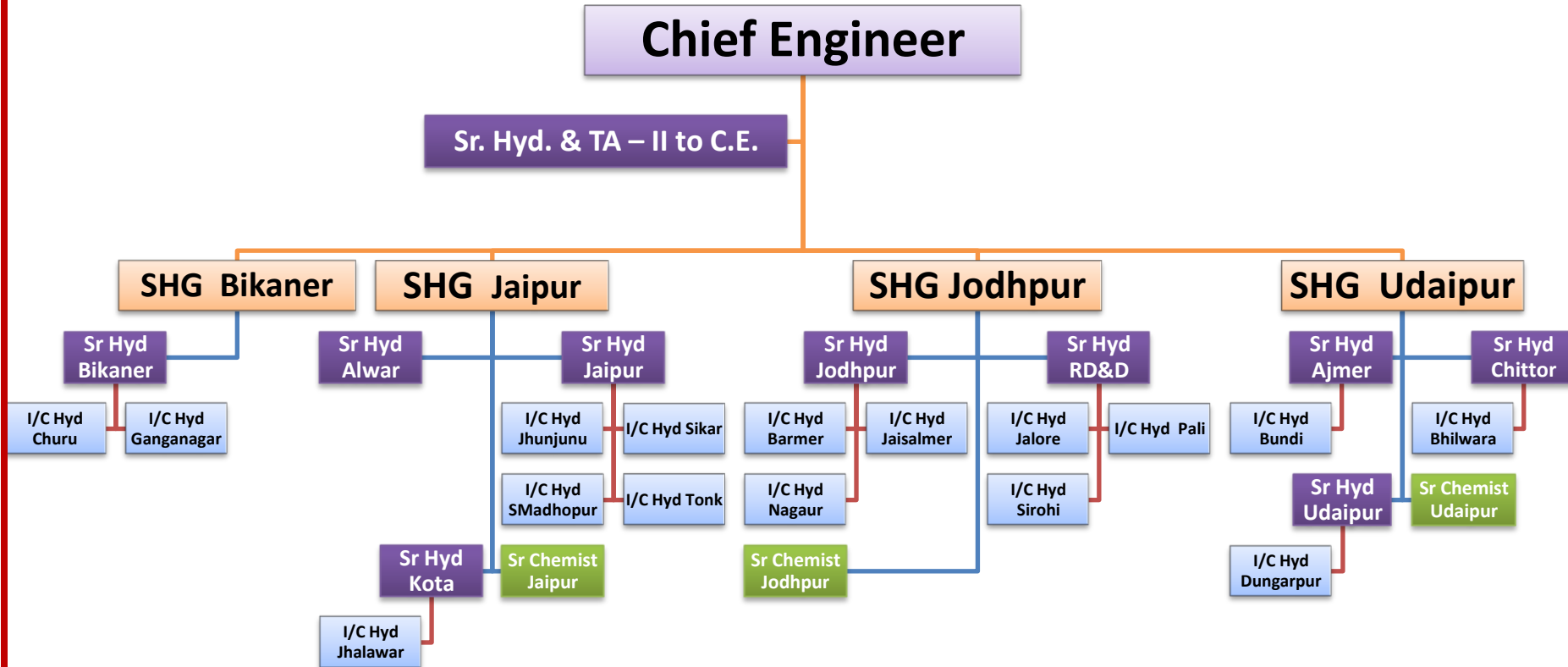
A.En. Banswara

A.En. Churu

SE = Superintending Engineer, Ex.En.= Executive Engineer, A.En. = Assistant Engineer, TA = Technical Assistant, CE = Chief Engineer

# GWD Organisational structure

## Level 3B : Survey and Research Circles



SHG = Superintending Hydrogeologist, Sr Hyd = Senior Hydrogeologist, I/C Hyd = Incharge Hydrogeologist, T.A. = Technical Assistant,